

CORPORATE PROFILE

MISSION



Empower individuals to unlock rapid career growth and personal transformation through in-demand skills and knowledge benefiting themselves and their organizations. We provide a dynamic learning environment where you gain the confidence to excel in the global workforce and pursue entrepreneurial goals.

VISION



To be a global leader in innovative, skill-based training that transforms lives and fuels economic growth. We envision a world where everyone has access to the learning resources they need to build a fulfilling and impactful career.



VALUES

We are committed to:



Empowerment: We equip learners with skills and knowledge, fostering confidence, self-belief and a drive for continuous improvement.



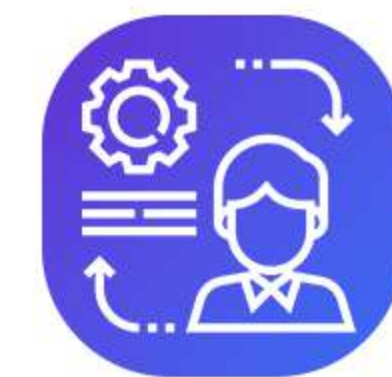
Innovation: We adapt and pioneer training methods that keep our learners ahead of the curve.



Excellence: We strive for the highest standards of ourselves and our training, because our learners deserve nothing less than the highest quality learning experiences.



Impact: We measure our success by the positive transformation we see in our learners' lives, careers and the performance of their organizations.



Practicality: We focus on real-world application, ensuring our students are job-ready from day one and able to make immediate measurable contributions in the workplace.

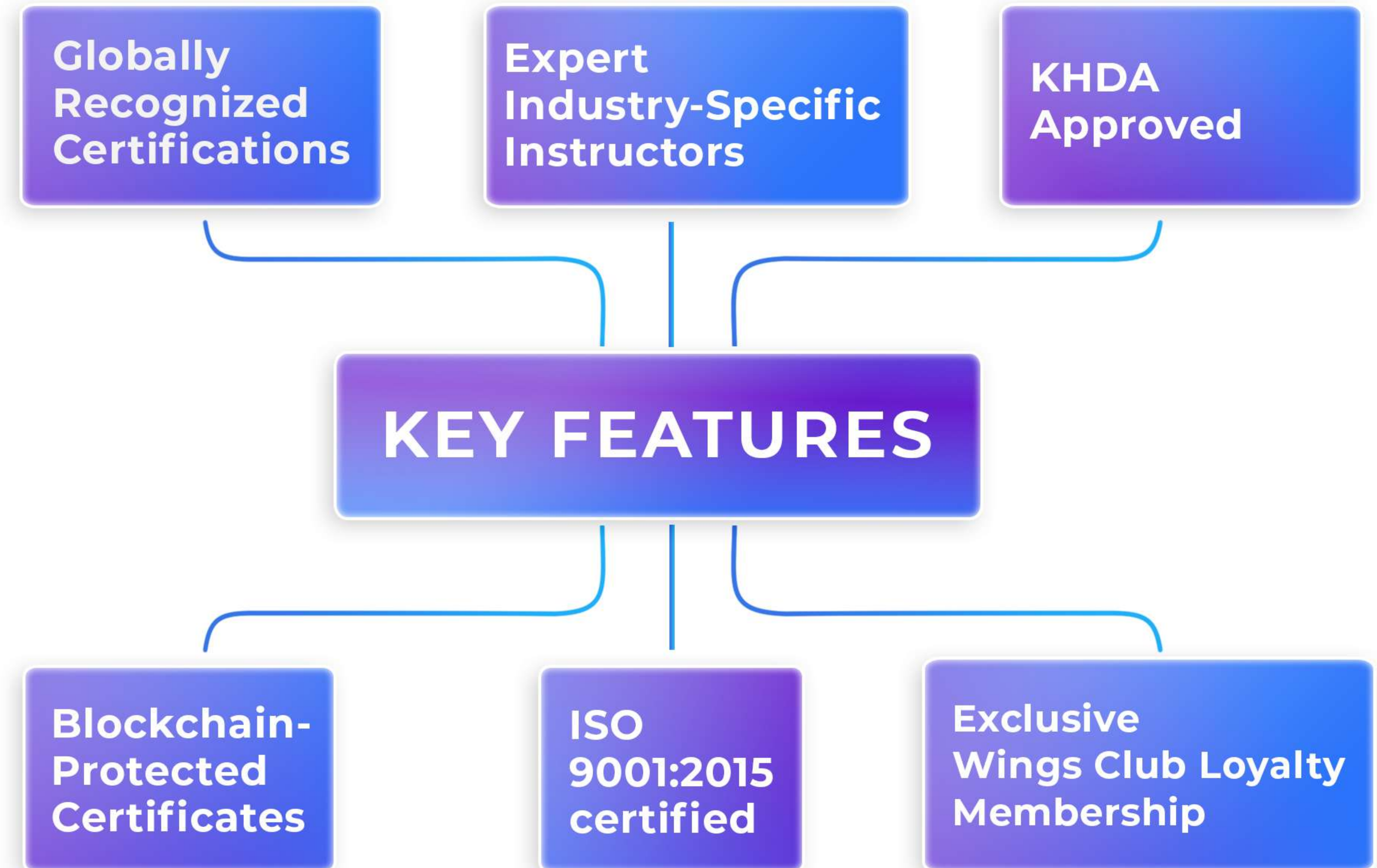
We do all the above while being Accountable, Collaborative, Ethical, Integral, Respectful, and Responsible in every aspect of our educational endeavors.

WHY WingsWay ?

WingsWay Training Institute is your gateway to in-demand skills, globally recognized certifications, and a thriving career.

We are an ISO-certified, award-winning, authorized training centre headquartered in Dubai, UAE.

Our mission is simple: to empower you to reach your full potential through a blend of industry-focused courses, expert mentorship, and practical experience. With global partnerships with leading certifying organizations like **IATA**, **CIPS**, **CILT**, **IFPSM**, **APS**, and **CFM** — WingsWay Training Institute prepares you to excel in your chosen industry and opens doors worldwide.



Awards & Recognitions



2022

Recognized for our standout approach to education & learning solutions, this award highlights our innovative training strategies and impactful results in shaping bright futures



2022

Crowned as the **“Best Training Institute”** offering distinguished Aviation, Travel & Tourism training. This award celebrates our commitment to nurturing young talent and experienced professionals to achieve new career heights.



2023

Awarded the **“Best Training Institute”** providing exceptional training in Logistics & Cargo, this reflects our dedication to advancing careers of logistics professionals with knowledge and practical skills essential to stay ahead in the competition.



2023

Securing the **“Best Training Institute”** title for the 2nd year running, reaffirms our position at the forefront of Aviation, Travel & Tourism training, thanks to our innovative teaching and unwavering commitment to student success

Affiliations & Accreditations

At WingsWay, we believe in setting the gold standard for education. That's why we have cultivated affiliations with world-renowned and globally recognised certification bodies.



**IATA : International Air
Transport Association
CANADA**



**The Chartered
Institute of Logistics
and Transport**

**CILT : Chartered Institute of
Logistics & Transport
UNITED KINGDOM**



**APS : American Purchasing
Society
USA**



**IFPSM : International
Federation of Purchasing
& Supply Management
FINLAND**



**CIPS : Chartered Institute of
Procurement & Supply
UNITED KINGDOM**



**CFM : Centre for Financial
Management
INDIA**

ADDIE Methodology: WingsWay's Training Approach

A

Analysis: We do in-depth analysis of the instructional goals and objectives: Learning Environment, Skills Gap Analysis, Understand Audience, and Expectations.

D

Design: Based on analysis, we design the best possible learning experience: Training Formats, Media Tools, Technology, Assessments.

D

Develop: Our SME meticulously creates compelling, engaging, impactful and relevant training material- We bring storyboards to life.

I

Implement: Deliver approved course to the audience.

E

Evaluate: We evaluate the effectiveness of the programs through Kirkpatrick model: Reaction, Learning, Behaviour, Results.



Our Learning Philosophy

At WingsWay Training Institute, we believe learning is a transformative journey. Our philosophy centres on a learner-focused approach, where we empower individuals and organisations to achieve their full potential through dynamic, practical, and outcome-oriented training experiences.

Key Pillars of Our Philosophy



Experiential Learning

We teach theory and its practical application through simulations, case studies, and hands-on activities.



Mentorship and Support

Our experienced instructors provide ongoing guidance, fostering a collaborative community for continuous growth.



Results-Driven

Our focus is on tangible outcomes. We measure the success of our training through skill development, workplace performance improvement, and career advancement of our learners.



Industry Relevance

Our programs are designed in collaboration with industry experts, ensuring content aligns with the latest workplace demands and prepares learners for immediate success.



Personalized Pathways

We understand that each learner has unique needs and goals. We offer flexible learning options and tailor programs to meet individual and organisational requirements.

WingsWay's Evaluation Model: Aligned with Kirkpatrick's Model

WingsWay Training Institute understands the importance of measuring the impact of training investments. Our evaluation approach draws upon the principles of Kirkpatrick's model to provide comprehensive insights into training effectiveness, ensuring a positive return on your investment.

Our rigorous yet adaptable evaluation process helps identify strengths, address gaps, and demonstrate the value of your training investment.

We work closely with you to customise evaluation methods that best suit your specific industry and organisational objectives.

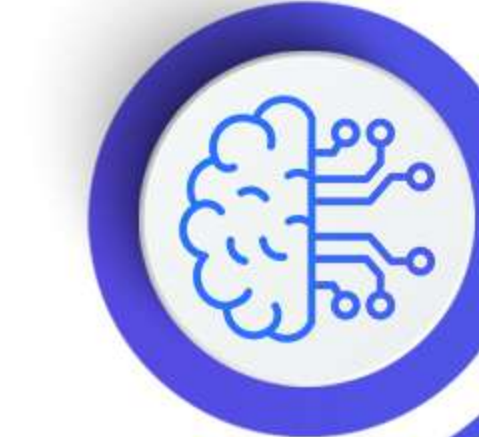
Level 1: Reaction

We gather detailed participant feedback to improve the learner experience.



Level 2: Learning

Assessments measure knowledge and skill acquisition.



Level 3: Behaviour

We track observable changes in workplace performance and identify areas for continued development.



Level 4: Results

For clients seeking ROI analysis, WingsWay offers expert consultation to quantify the business impact of training programs.



Empowered Employees From



Virtual Instructor-Led Training – VILT

Our Virtual Instructor-Led Training (VILT) brings the dynamism of our classroom experiences directly to your workforce, empowering them to learn from anywhere at their own convenience.

Our engaging, real-time virtual sessions combine expert instruction with the flexibility of online learning, allowing busy professionals to participate seamlessly, regardless of location or time zone.

This eliminates travel disruptions and provides the freedom to learn from the comfort of their home office or a convenient location.



Face-to-Face Classroom Training

WingsWay Training Institute understands the power of dynamic, in-person learning experiences.

Our classroom training is designed to immerse you in a collaborative environment, fostering knowledge exchange and building professional networks.

Our Training Approach includes

- 1** Learn from industry-experienced instructors.
- 2** Engage in interactive learning and group activities.
- 3** Seek personalized guidance and feedback.
- 4** Build a supportive learning environment with like-minded peers.



Training Categories

**Human
Resources
Programs**

**Leadership &
Management**

**Risk &
Compliance**

**Skills
Development**

**Banking,
Finance &
Treasury**

**Procurement &
Supply Chain**

**Quality
Management**

**Information
Technology &
Excel**

**Sales and
Customer
Service**

200+ Courses

In-House Customised Training Programs

Time, Venue, Content – Your Choice!

WingsWay Training Institute provides fully customizable training solutions, delivered on-site at your location or virtually, on a schedule chosen by you.

We believe that the right training environment and a tailored curriculum lead to optimal learning outcomes and enhanced performance within your organization.

Hence, we are committed to delivering exceptional training experiences that **drive measurable results** for your organization.

Types of Customised Training



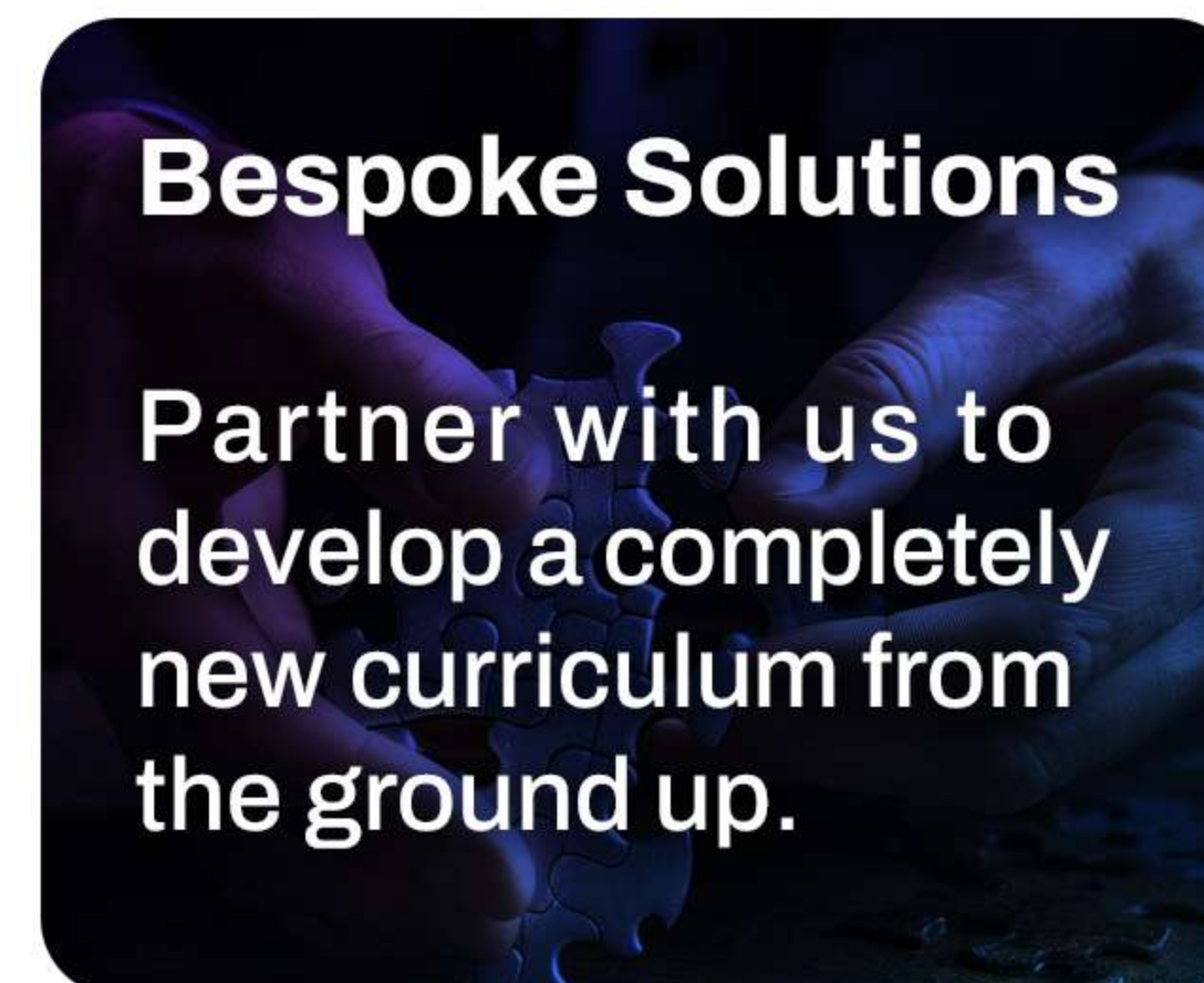
Standard Courses

Select from our existing range of in-demand programs



Adapted Training

Modify an existing course to fit your unique requirements.



Bespoke Solutions

Partner with us to develop a completely new curriculum from the ground up.

Our Approach:

01

Need Analysis by identifying skills gaps & business goals.

02

Deliver Tailored Curriculum

03

Flexible Training on-site, virtual, or hybrid format.

In-House Customised Training Programs

Benefits of In-House Courses



Wings Club Loyalty Rewards Program

GET REWARDED with Wings Club, our unbeatable Loyalty Rewards Program. Enjoy increasing-advantages as you continue to 'Invest in Yourself' at WingsWay

Our TOP 10 Innovative Industry-Best Features!
FREE & Exclusive, for our Amazing WingsWay Students:

- ✓ Simple auto-enrolment for all our students and alumni.
- ✓ Attend unlimited refresher repeat sessions for up to 12 months after course completion
- ✓ Lifetime Personal Consultation
- ✓ Lifetime guidance with workplace problems
- ✓ Special Offers
- ✓ Friends & Family Discounts
- ✓ Extra Study Hours & Mock Exams
- ✓ Invitation to our Events, Seminars, Webinars & Masterclasses
- ✓ Gift Vouchers on Special Occasions
- ✓ Earn up to \$100 per Referral





Upskill & Drive Results



www.wingswaytraining.com



ali@wingsway.org



+971 50 422 9017

DUBAI



306 & 701, AB Plaza-8, Office Block
Opp. Al Mulla Plaza - Al Mamzar,
Dubai, UAE

ABU DHABI



1003, 10th Floor, ADCP Tower C,
Electra Street, Abu Dhabi, UAE